



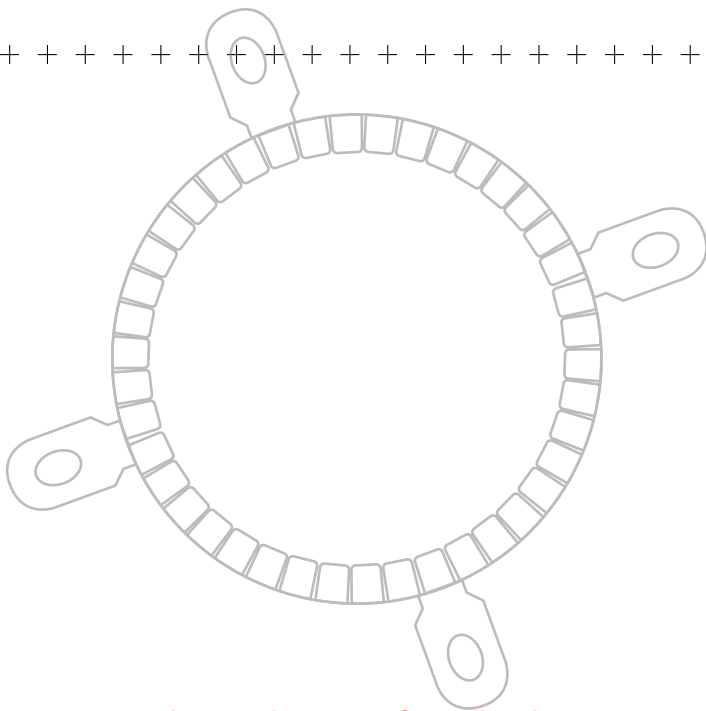
Fire protection systems

Fire protection for pipes

RORCOL fire protection collars



www.airfiretech.at



“Special installation tools even for difficult installation situations.”

Properties and areas of application

Standard sizes

- V30 DN40 – DN140
for plastic pipes up to ø 135 mm
- V60 DN56 – DN250
for plastic pipes up to ø 250 mm
- AV60 DN40 – DN160
for composite aluminium pipes up to ø 63 mm
- AV60 DN40 – DN110
for cables up to 5x6,0 mm² (multiple filling)
- AV60 DN40 – DN63
for copper pipes up to ø 18 mm

Advantages at a glance

- Ω omega applications of types AV60 & V60 approved
- U/U open/open tested, therefore no application errors possible
- Zero distance between the fire protection collars
- Partitioning of plastic pipes up to ø 250 mm
- Tested for all conventional pipe and insulation materials as well as combinations
- Also for pipes with sound insulation
- Tested for surface mounting and installation in walls and ceilings
- Classification up to EI120
- Low height
- For installation into a variety of support structures
- Tested in a large variety of soft partitioning systems
- Special applications: Collar positioning, diagonal positioning, multiple installation, for pellet pumping hoses, one dimension larger than the pipe
- Stainless steel housing

“Also approved for plaster-board shaft walls with cladding on one side!”

Made in Austria



Rorcol fire protection collars

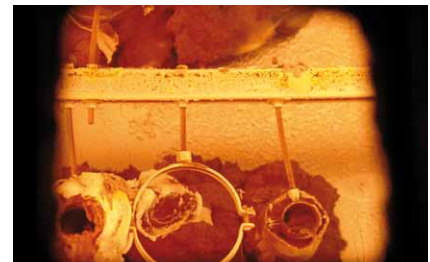
Saving on installation costs, but never on safety!

In case of fire, the Rorcol fire protection collars for flush mounting or surface mounting seal the space in a plastic or multilayer media pipe (PVC, PP, PE or ABS), with and without insulation, against burning through. The fire protection collar is tested in walls and ceilings U/U (open/open) and can therefore also be used in vented wastewater pipes, gas pipes, drinking water pipes and heating pipes. The collars can be installed with ≥ 0 mm housing spacing and can also be used for diagonal pipe openings.

The pipe insulations made from polyethylene, polyester fleece, closed-cell elastomer foam (synthetic rubber) and mineral wool with aluminium laminate can be installed locally "LS" and continuously "CS". For solid walls from 100 mm wall thickness, dividing walls with cladding on both sides, ceilings from 150 mm and tested soft partitioning systems from 100 mm in walls and ceilings. Up to DN100, they can also be used in plasterboard shaft walls with cladding on one side (possible cladding 2 x 20 mm fire-proof plasterboard, 2 x 25 mm fire-proof plasterboard, 3 x 15 mm fire-proof plasterboard). The fire protection collar consists of a housing made of stainless steel plate with an inserted intumescent material. Tested as per ÖNORM EN1366-3, EI90/EI120 classified as per ÖNORM EN13501-2 and approved as per ETA 13/0758.



Tested as per EN 1366-3.



Collar with deployed foam in fire chamber



Closed collar from room side



“The Rorcol fire protection collars allow me to plan more flexibly and efficiently than ever before!”

Rorcol V30



Approved for

- Plastic pipes made from PE, PP, PVC and multilayer pipes
- With or without insulation
- Flush mounting or surface mounting and for diagonal pipe openings

Application

- Shaft walls ≥ 40 mm
- Solid walls and stud partition walls
- Plywood panel ceilings and solid ceilings
- Soft partitioning systems for walls and ceilings
- Zero spacing

Product description

- 30 mm stainless steel housing
- Dimensions DN40 to DN140
- EI90/EI120 U/U classified as per ÖNORM EN 13501 Part 2

Article number	Dimension
9504040	16–40 mm
9504056	50–56 mm
9504063	59–63 mm
9504080	75–80 mm
9504110	110 mm
9504125	125 mm
9504140	140 mm



Premo-Rorcol

Prefabricated, stepped installation housing made from fire protection plates with inserted intumescent material; EI90 U/U or U/C classified as per ÖNORM EN 13501 Part 2.



Prodec-San

For partitioning the sewer section ventilation for PP wastewater pipes up to DN110 above the last floor up to the loft. Also prevents fires from spreading from top to bottom (a→b).

Rorcol V60



Approved for

- Plastic pipes made from PE, PP, PVC and multilayer pipes
- Pellets pipes with or without insulation
- Flush mounting, surface mounting and special applications:
Ω Omega applications, sleeve, diagonal pipe openings

Application

- Shaft walls ≥ 40 mm
- Solid walls and stud partition walls
- n Plywood panel ceilings and solid ceilings
- EPS lightweight concrete (Protteolith)
- n Soft partitioning systems for walls and ceilings
- Zero spacing

Product description

- 60 mm stainless steel housing
- Dimensions DN56 to DN250
- EI90/EI120 U/U classified as per ÖNORM EN 13501 Part 2

Article number	Dimension
9503056	50–56 mm, Ω Omega application
9503063	59–63 mm, Ω Omega application
9503080	75–80 mm, Ω Omega application
9503110	110 mm, Ω Omega application
9503125	125 mm
9503140	135–140 mm
9503160	160 mm
9503180	180 mm
9503200	200 mm
9503250	250 mm

Made in Austria

Manufactured in Austria

Rorcol AV60



Approved for

- Composite aluminium pipes, metal pipes and cables
- With or without insulation
- Flush mounting, surface mounting and special applications:
Ω Omega applications, multiple filling, sleeve, diagonal pipe openings

Application

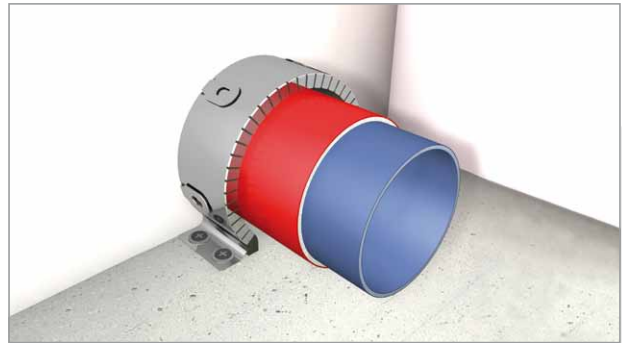
- Shaft walls ≥ 40 mm
- Solid walls and stud partition walls
- Plywood panel ceilings and solid ceilings
- EPS lightweight concrete (Protolith)
- Soft partitioning systems for walls and ceilings
- Zero spacing

Product description

- 60 mm stainless steel housing
- Dimensions DN40 to DN160
- EI90 U/C classified as per ÖNORM EN 13501 Part 2

Article number	Dimension
9505040	16–40 mm, Ω Omega application
9505056	50–56 mm, Ω Omega application
9505063	59–63 mm, Ω Omega application
9505080	75–80 mm, Ω Omega application
9505110	110 mm
9505125	125 mm
9505140	140 mm
9505160	160 mm

Omega application



With Rorcol V60 for

- PP plastic pipes up to DN110, multilayer pipes
- With or without insulation
- Dimensions DN40 to DN110

With Rorcol AV60 for

- Composite aluminium pipes, cables
- With or without insulation
- Dimensions DN16–40 to DN75–80

Application

- Shaft walls ≥ 40 mm
- Solid walls and stud partition walls
- Solid ceilings ≥ 150 mm

V60 & AV60

- 60 mm stainless steel housing
- EI90/EI120 U/U or U/C classified as per ÖNORM EN 13501 Part 2

Article number	Dimension
9503056	50–56 mm (Rorcol V60)
9503063	59–63 mm (Rorcol V60)
9503080	75–80 mm (Rorcol V60)
9503110	110 mm (Rorcol V60)
9505040	16–40 mm (Rorcol AV60)
9505056	50–56 mm (Rorcol AV60)
9505063	59–63 mm (Rorcol AV60)
9505080	75–80 mm (Rorcol AV60)

Non-fire side after a successful fire test as per EN 1366-3. Wastewater pipes tested open/open (UIU). Water, heating and gas pipes tested open/closed (UIC).





Fire protection systems

1130 Vienna
Austria
Stranzenberggasse 7b/2
T: +43 1 982 01 74-0
F: +43 1 982 01 74-930
E: office@airfiretech.at
I: www.airfiretech.at



*“Our employees provide
advice from planning to
installation.”*

